



Oil & Gas, Marine, Mining & Industrial Engineering - Fabrication – Construction



Aboveground – LPG Tank & Pressure Vessel

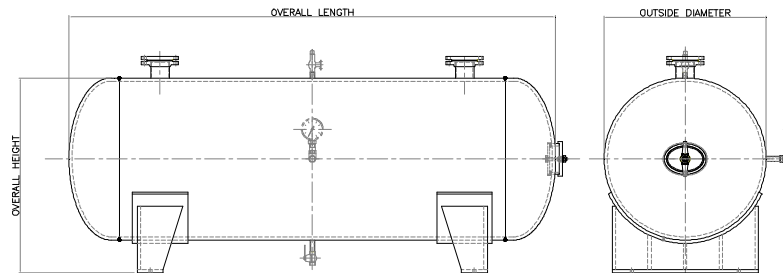


PT. LINTECH DUTA PRATAMA designed and fabricated above ground LPG tank storage and Pressure Vessel required by the oil & gas and energy process companies. As an oil and gas services, we available your LPG tank and others of pressure vessel with high performance quality and desirable refer to standard requirements. More than, Lintech's number-one priority is to meet or exceed every client's goals for production, process specifications, reliability, and cost efficiency.

Aboveground – Tank Horizontal Type

Lintech Containers Aboveground Tanks Horizontal type have the following features:

- Available in 0.5 to 75 tons capacity
- Powder coated for a durable, long-lasting finish
- Material of construction maybe carbon or stainless steel
- Comprehensive test requirements to satisfying your tank capability
- Tanks maybe supported on stationary saddles, anti-roll stabilizers or structural skid configurations
- Optional accessories as your requirement refer to standard functions.



Aboveground tank Horizontal Type Dimension Information :

All Tanks Dimensions are Approximate ('Till 8 tons Dimension Shown) :

Capacity (Tons)	Outside Diameter	Head Type	Overall Length	Overall Height
0.5	38.5"	Ellips	1840 mm	1177 mm
1	45"	Ellips	2650 mm	1340 mm
2	54"	Ellips	3642 mm	1566 mm
4	66.5"	Ellips	4734 mm	1890 mm
6	77"	Ellips	5340 mm	2147 mm
8	85.5"	Ellips	5725 mm	2373 mm

PT. LINTECH DUTA PRATAMA

WIRA JATIM INDUSTRIAL ESTATE
 Jl. Mastrip 70 Karang Pilang – Surabaya INDONESIA 60221
 Telp. : +62 31 7666891
 Fax. : +62 31 7664604

Standard Specifications :

- Modern's standard opening locations and two (2) lifting lugs.
- All accessories required will comply to standard requirements
- Check with Modern for type of Emergency Vent Opening supplied.
- Check with Modern for type of Emergency Vent Openings supplied. Support may be two (2) saddles, stabilizers, or skid configuration.
- Other exterior and interior coating systems available upon request.
- Other tank sizes available upon request

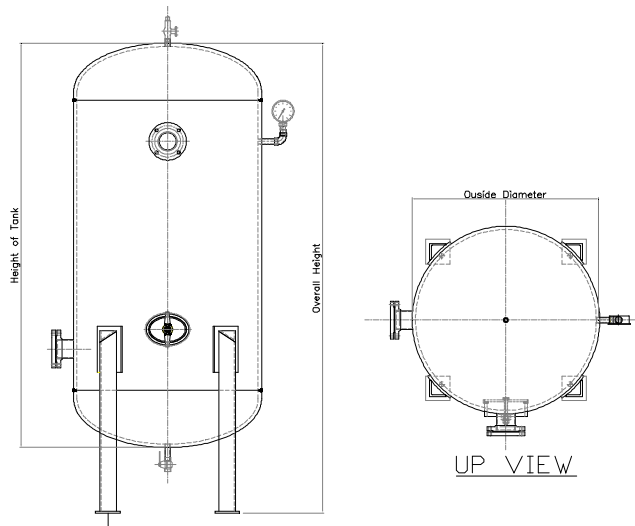
Special fabrication:

Modern can incorporate dished tops, dished and coned bottoms all supported on saddles or legs. Only new materials are used in tank construction. Each tank is sized with the appropriate normal and emergency vent openings as defined in the tank's standard of construction. For special applications, such as products that have a larger specific gravity than water, Modern offers ASME Code, designed tanks in the ASME Code Div VIII Sect I design configurations.

Aboveground – Tank Vertical Type

Lintech Containers Aboveground Tanks Vertical type have the following features:

- Available in 0.3 to 20 tons capacity
- Powder coated for a durable, long-lasting finish
- Material of construction maybe carbon or stainless steel
- Single or double wall steel configurations available
- Tank supports maybe beam legs or skirt
- Comprehensive test requirements to satisfying your tank capability
- Optional accessories as your requirement refer to standard functions.



* Dimension available will supply to Clients as our design referred to ASME Div VIII Sect I *

PT. LINTECH DUTA PRATAMA

WIRA JATIM INDUSTRIAL ESTATE
 Jl. Mastrip 70 Karang Pilang – Surabaya INDONESIA 60221
 Telp. : +62 31 7666891
 Fax. : +62 31 7664604



Standard Specifications :

- Modern's standard opening locations and two (2) lifting lugs.
- All accessories required will comply to standard requirements
- Check with Modern for type of Emergency Vent Opening supplied.
- Other exterior and interior coating systems available upon request.
- Other tank sizes available upon request

Vertical Configurations:

These are steel atmospheric tanks intended for aboveground storage of non-corrosive, stable, flammable, and combustible liquids that have a specific gravity not exceeding that of water. Vertical tanks maybe of single or double wall construction.

If the tank is a double wall configuration, then it has interstitial monitoring capabilities. These tanks may also be built with or without multiple compartments for multiple fuel storage. Tanks generally have Ellips, Torispherical, Hemispherical, Conical, and Toriconical Heads.

Special fabrication:

Modern can incorporate dished tops, dished and coned bottoms all supported on skirts or legs. Only new materials are used in tank construction. Each tank is sized with the appropriate normal and emergency vent openings as defined in the tank's standard of construction. For special applications, such as products that have a larger specific gravity than water, Modern offers ASME Code, designed tanks in the ASME Code Div VIII Sect I design configurations